



D300

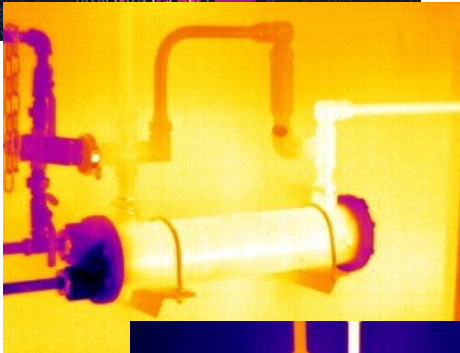
Mid Level Thermal Camera

SATIR D300 has been designed with the user in mind to ensure that it is simple to use while delivering a high quality image with a 384x288 resolution.

The D300 comes with a laser ranging feature which allows the user to point the laser to the target and it automatically focus the image.

The D300 comes with Duo Vision Plus and a touch screen.

Duo Vision Plus add additional clarity to the thermal image by using a digital overlay. Duo Vision Plus also works well with it's touch screen that will auto focus to ensure the user has a clearly focused thermal image. This means when generating a report the image is already focused which enables accurate evaluation.



Key Features

- High Speed Processor
- IR/Digital/Duo-Vision/Duo Vision Plus
- Laser Ranging
- Adaptable LCD Display
- Motorised Lens
- 5 MP HD Camera
- 8 Hours of Battery Life

D300 Specifications

Image Performance	
Detector Resolution	384x288
Thermal Sensitivity (N.E.T.D)	≤0.04°C@30°C
Spatial Resolution	1.09mrad
Field of View (F.O.V)	24°x17°
Spectral range	7.5~14μm
Focus Mechanism	Motorised
Measurement	
Temperature Range	-20°C ~ + 600°C, up to +1000°C or +1500°C (Optional)
Accuracy	±2°C or ± 2% of readings
Image Presentation	
Image Mode	IR/Digital/Duo-Vision/Duo-Vision Plus
Visible Pixels	HD 5MP Digital Camera
LCD Display	3.5" Capacitive Touch Screen
Frame Rate	50Hz / 60 Hz
Digital Zoom	1x to 10x, continuous
Colour Palettes	8 Colour Palettes
Video auto record	Every 4 seconds
Image Output Mode	Analogue Video Output
File Format (Thermal/Visual)	JPEG
Laser	
Laser Type	Class 2, 1mW/635nm, red
Laser Ranging	Yes—Auto focus the camera
Measurement Range	0.05m—30m
Environmental	
Encapsulation	IP54
Shock/Vibration Resistance	25G/2G
Operating Temperature	-20°C ~ +50°C
Physical Characteristics (Camera Body)	
Weight	0.85KG
Dimensions	232mm×115mm×168mm
Additional Features	
Built-in Memory	Yes
Battery Life	8 Hours
Ports	USB Type C
Video Record	Yes
Wi-Fi	Yes
Bluetooth	Yes (Optional)
Real time transmission	USB real time transmission with temperature data (optional)

Please be aware specifications can vary from time to time